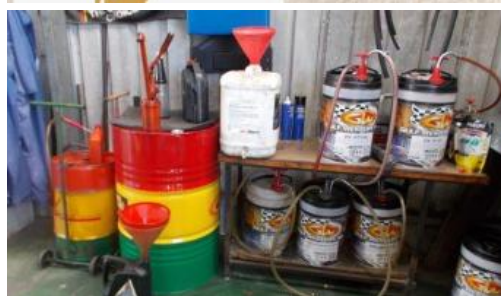
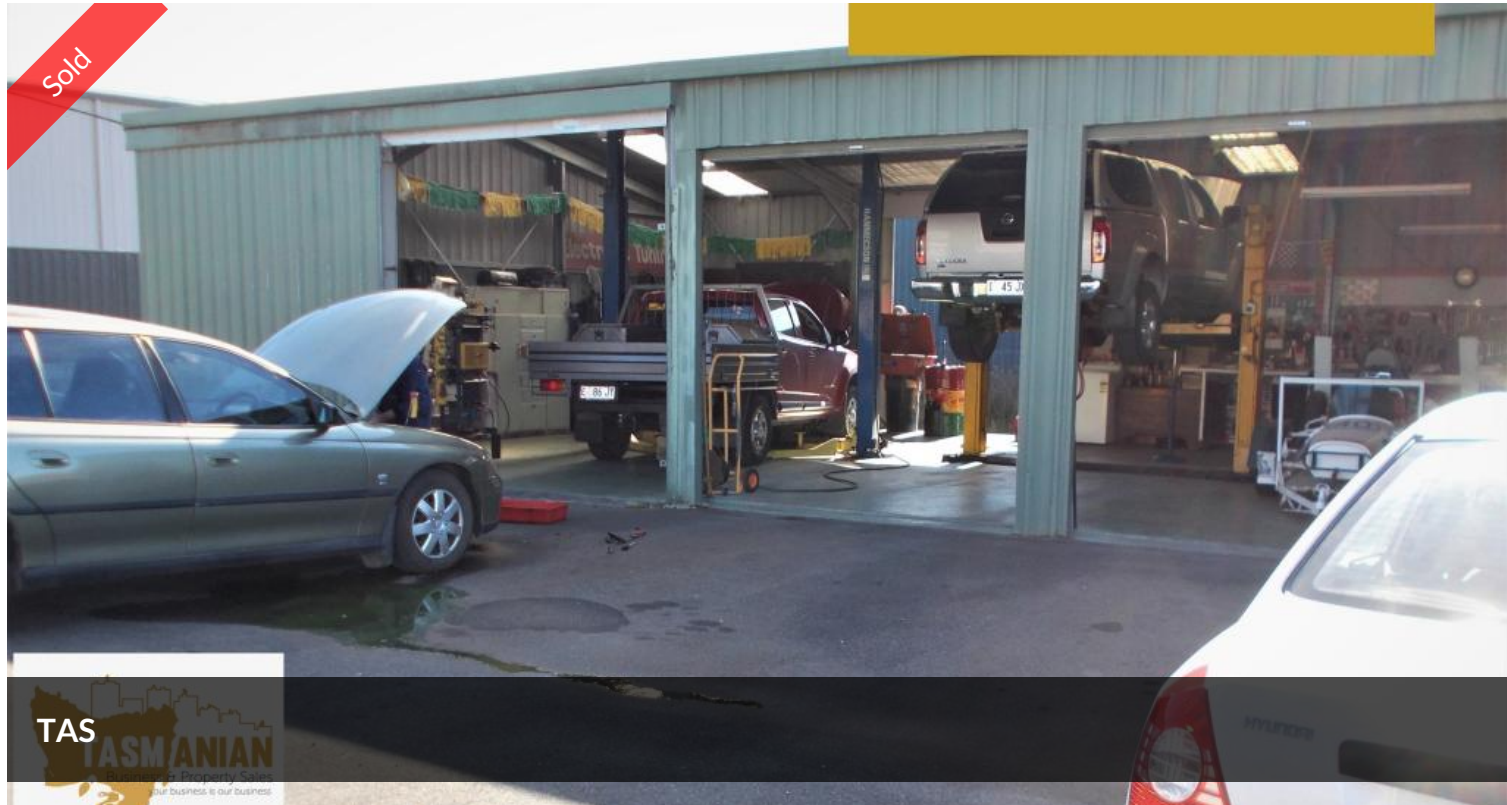


Sold



REDUCED PRICE LONG ESTABLISHED MECHANICAL REPAIRS IN GROWTH AREA \$49,500+SAV

Small entry level mechanical repair business is well presented, clean and tidy with plenty of upside.

Great value, regular repeat customers, full list of plant & equipment.

This business has been in the same location with the same owner for more than 20 years.

Shearwater/Port Sorell is one of the high growth areas in Tasmania, this business has plenty of upside.

Currently operated with one owner and a casual employee.

Extensive list of plant & equipment,, inc two hoists, vehicle, etc etc,

Great 5 day a week business with many repeat customers.

There is extra land to display vehicles for sale, business would increase with a web site, advertising or a revamp, automotive parts and tyres could be retailed, extra staff employed.

Performing all types of mechanical repairs on all models of vehicles and four wheel drives.

Well priced business, with very reasonable rent, showing a healthy profit and ready to be taken to the next level.

Contact Tasmania's premier Business Brokers Paul Scott at

Price SOLD for \$49,500

Property Type Business

Property ID 336

AGENT DETAILS

Paul Scott - 0477771098

OFFICE DETAILS

Tasmanian Business and Property Sales

31 Ence Dr St Leonards, TAS,

7250 Australia

0432256682



pauls@tasbps.com.au or phone 0477 771 098, or contact Donna Kremmer at donnak@tasbps.com.au or phone 0490 080 173.

INTENDING PURCHASERS TO MAKE THEIR OWN INVESTIGATIONS AND ENQUIRIES IN RELATION TO THE BUSINESS AND NOT TO RELY UPON WARRANTY OR STATEMENT MADE BY THE VENDOR OR BY ANYONE ON HIS/HER BEHALF; Please Note: All figures quoted are approximate.

The above information provided has been furnished to us by the vendor/s. We have not verified whether or not that information is accurate and do not have any belief in one way or the other in its accuracy. We do not accept any responsibility to any person for its accuracy and do no more than pass it on. All interested parties should make and rely upon their own inquiries in order to determine whether or not this information is in fact accurate.